

**WHAT KIND OF SUPPORT CAN YOU EXPECT?**

- Shaklee is more than just great products and a way to earn money. We are a diverse community of like-minded people who share the belief that by consistently taking small steps of positive change together, we make a **huge difference in the health of people and our planet.**
- When you choose to build a business in Shaklee, you are **independent but not alone.** You are part of a team with support from mentors, other team members, and the Shaklee Home Office.
- **Support tools that can be integrated into your current business**—Product Kit to get you started; personal website; Shaklee Connect™ Mobile APP, to help you manage your business on the go; training and education by the Shaklee Medical Professionals; training tools to assist you in conducting educational seminars on Healthy Nutrition, Healthy Weight, Healthy Cleansing, and Sports Nutrition; potentially lucrative compensation and leadership plan; personal and professional development; incentives, luxurious trips, and recognition.
- Since our founding, Shaklee has **paid over \$7 billion in commissions** to its Distributors without missing a month. \$2.2 billion of that has been paid out in just the past 10 years, representing over 30% of commissions paid in the entire 58-year history of Shaklee.
- Over the past 10 years, **Shaklee has doubled in size.** This is important because so many companies out there are popping up and then disappearing from the scene. Shaklee is not only here to stay, we are growing.

Contact me for complete program details.

**HOW WILL YOU JOIN SHAKLEE?**

Enjoy the benefits, and be rewarded in more ways than you can imagine.

**USE**

Experience the way Shaklee products can help transform your health.

**SHARE**

Share Shaklee products with friends and family and earn extra cash + rewards.

**BUILD**

Build a team in a way that works for you and fits your life, with the potential for significant financial rewards.



# Shaklee Integrated Wellness Program™

**FOR FITNESS TRAINERS, STUDIOS, GYMS,  
AND OTHER SMALL BUSINESSES**

Improve client and staff retention

Create another income stream

Expand your business beyond its four walls



**WHEN IT COMES TO HEALTH AND FITNESS, WE HAVE A MISSION IN COMMON.**

We are interested in helping people live longer, happier, and healthier lives!

**WHO IS SHAKLEE?**

Shaklee is a leading global natural nutrition company. Our founder, Dr. Forrest C. Shaklee, started innovating nutritional supplements over 100 years ago when he developed Vitalized Minerals, one of the first multivitamins. Since then, Shaklee has been a leader in healthy nutrition, innovating through science, and looking to nature for the answers to healthier living. We believe that nature holds the answers to a healthy and productive life, and by using pure and potent ingredients and the foremost scientific research, we formulate nutritional products that are truly life enhancing.



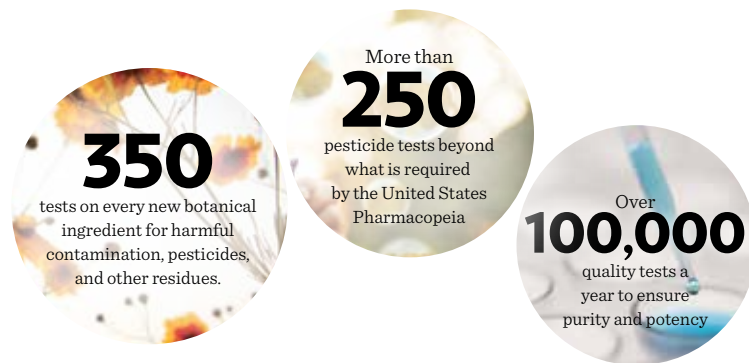
1915

**THE SHAKLEE DIFFERENCE**

Purity—Quality ingredients, safe products

Potency—Extensive studies, effective nutrients

Performance—Better absorption, better results



**WHY SUPPLEMENT?**

Many people continue to regularly eat outside of their homes. Even when we do prepare what we consider healthy meals in our homes, the nutrient value is lacking. In order to obtain the nutrients we are missing, studies show that supplementation and lifestyle can have an outstanding and positive impact in optimizing our health.

- Fast food sales have increased more than 2,000% over the past 30 years
- Nutritional values of many crops have declined
- It's estimated that 90% of Americans fall short of getting essential nutrients in their diets

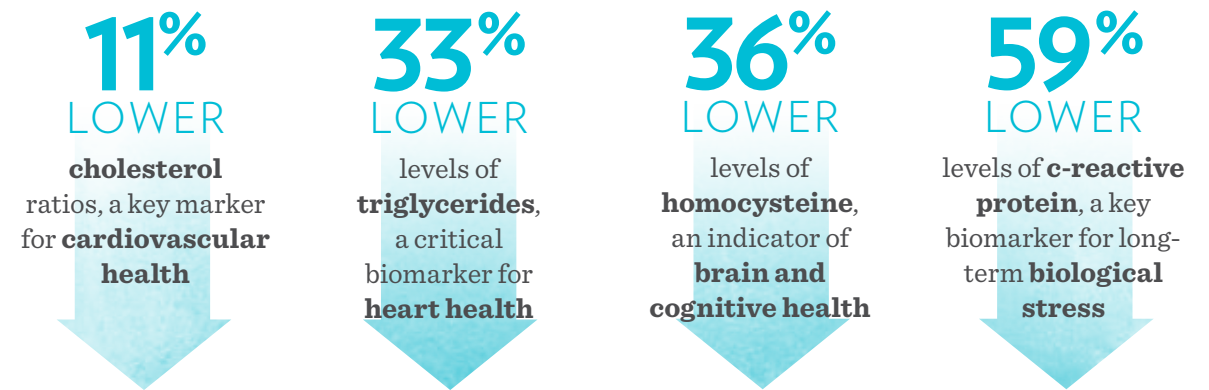
**WHY SHAKLEE?**

Not all supplements or supplement companies are created equal. Shaklee believes in documentation and not just conversation. A groundbreaking Landmark Study correlates long-term supplement use with better health markers compared to nonsupplement users.

For the first time, UC Berkeley conducted “The Landmark Study”—a study in which a variety of dietary supplement users were compared to nonsupplement users and single supplement users. The results were published in the *Nutrition Journal* in 2007. Users of Shaklee supplements were shown to have markedly better health compared to nonsupplement users who were an average of 10 years younger. Plus, Shaklee users had substantially higher levels of nutrients in their blood. Some of the findings showed higher levels of key indicators and biomarkers of cardiovascular and cognitive health as well as lower levels of biological stress.

**THE LANDMARK STUDY\***

One of the largest studies of long-term supplementation found that Shaklee users had†:



**WE WANT TO PARTNER WITH YOU**

We want to join you in educating people that exercise combined with proper nutrition can help them live longer, happier, and healthier lives.

Recently there has been a rise in the number of boutique fitness studios and gyms, but many of these businesses do not have a wellness program that includes education or products related to healthy nutrition, weight loss, and sports nutrition as part of their offering. **Imagine the growth your business could have by being able to offer these programs to your clients!**

We have developed the **Shaklee Integrated Wellness Program™ (SIWP)** to give your business a competitive edge that will help you give additional benefits to your clients, expand your business beyond your four walls, increase your customer retention, and create an additional income stream.

**WHAT IS THE SHAKLEE INTEGRATED WELLNESS PROGRAM™?**

It is a “business in a box”—a comprehensive wellness program that provides you with the education, tools, and support to create awareness and education among your existing and future clients regarding:

<b>Healthy Nutrition</b>	Shaklee Life Plan™ is the result of the foremost scientific research and decades of studies, designed to bring you the essential nutrients for a healthy life.
<b>Healthy Weight</b>	Lose the right kind of weight. Shaklee 180® is a revolutionary weight-loss and weight-management program with products designed to help you lose fat, not muscle.
<b>Sports Nutrition</b>	Products that help athletes perform their best before, during, and after workouts.

†When compared to nonsupplement users.

\*Percentages reflect Shaklee supplement users compared with nonsupplement users. Data for nonusers was obtained from NHANES 2001 – 2002 and NHANES III 1988 – 1994.